

Accommodation:

We made a pre-reservation of rooms at the Sheraton Bratislava Hotel

Address:
Pribinova 12
Bratislava 81109
Slovakia

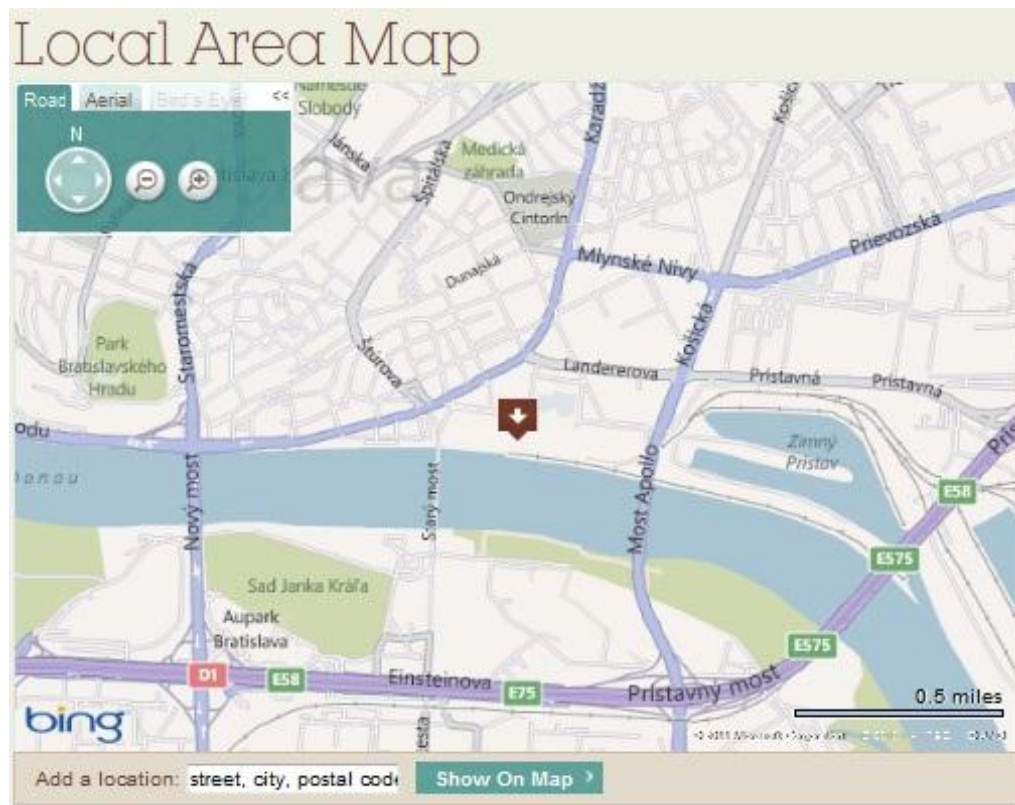
Phone: (421) (0) 2 3535 0300
Fax: (421) (0) 2 3535 0009
Web: <http://www.starwoodhotels.com/sheraton/property/overview/index.html?propertyID=3330>

Single room: € 125 incl. breakfast

Double room: €125 incl. breakfast

Please book your accommodation directly at this [LINK](#) as soon as possible and until **31/10/2011** at the latest.

For other hotels nearby please take a look under <http://www.booking.com>



Getting Here

RAILWAY

BRATISLAVA MAIN STATION

Travel Distance: Approximately 2.0 km/1.24 miles

AIRPORT

IVANKA AIRPORT (BTS)

Travel Distance: Approximately 7.0 km/4.35 miles

BUS

MLYNSKE NIVY BUS STATION

Travel Distance: Approximately 1.0 km/0.62 miles

The names of stops where to get off

Mala Scena: 28, 50, 70, 95, 133

Nova Budova: 28, 66, 133

Landererova: 50, 66, 78, 88, 95, 80,10

TRAM

The names of stops where to get off

Safarikovo Namestie: 4,11 , 12, 13, 14

Jesenskeho: 28, 66, 133

Driving Directions to the Hotel

From Budapest (Southeast)

- * From D2, head towards E65 - Zilina, Komarno, Bratislava Centrum.
- * Continue towards Bratislava Centrum.
- * Take the exit towards Centrum.
- * At Petrzalka continue along Kosicka and go to bridge Apollo.
- * After passing the bridge turn left.
- * Pass the Slovak National Theatre and follow the EUROVEA Galleria sign.
- * Continue towards the hotel.

From Milan Rastislav Stefanik/Ivanka Airport (South)

- * Leaving the airport, turn left onto D1 / E575 in the direction of Brno or Wien.
- * Continue 5.5 kilometer.
- * Take Centrum Exit.
- * Proceed toward Pristav.
- * After passing the National Theatre, turn left onto Olejkarska.
- * Continue on Pribinova Street to the hotel.

From Vienna (West)

- * From E58/D4, head towards E65 Zilina, E75 - Brno, Bratislava.
- * Continue along E58 / E65 / E75 / D2, towards Bratislava centrum.
- * At Petrzalka, continue along Kosicka and proceed to Bridge Apollo.
- * Pass the bridge and turn left.
- * Continue pass the Slovak National Theatre and follow the EUROVEA Galleria sign.
- * Continue towards the hotel.

From Prague (Northwest)

- * From D2, head towards Zilina - Komarno, Centrum.
- * Take the exit Cunovo, Haje, Centrum.
- * Proceed towards Centrum, Ruzinov.
- * At Petrzalka continue along Kosicka and go to bridge Apollo.
- * After passing the bridge turn left.
- * Pass the Slovak National Theatre and follow the EUROVEA Galleria sign.
- * Continue towards the hotel.